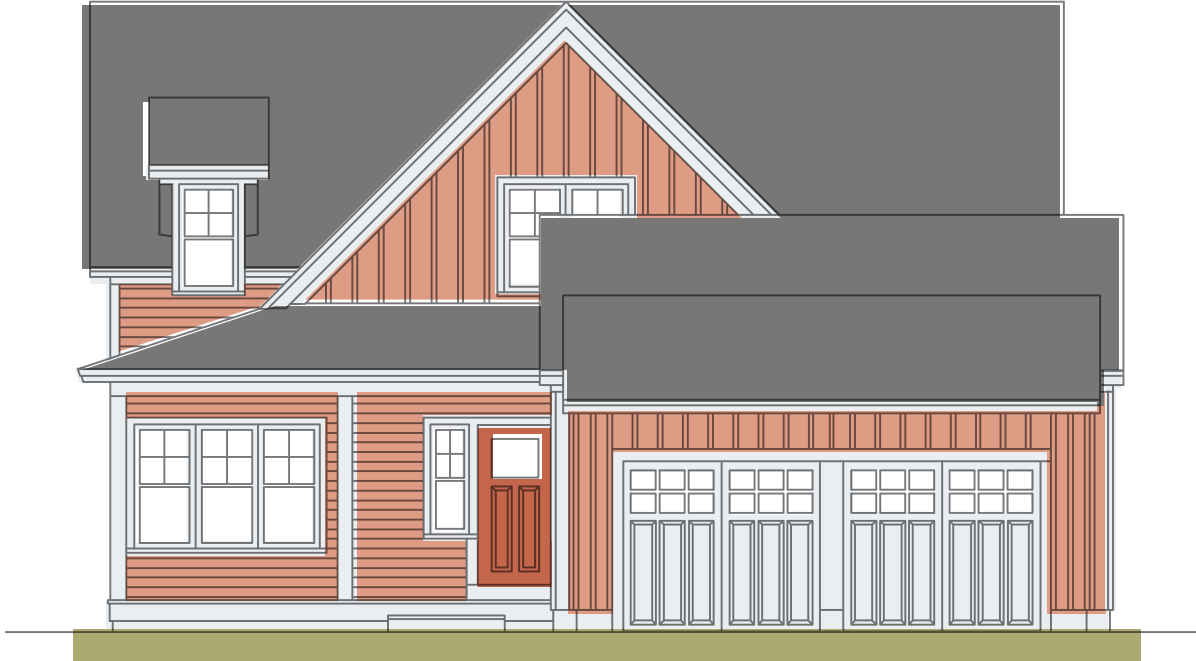


# CLIFFSIDE

BY WHITMAN HOMES



2,630 sq ft  
3 bedrooms  
2.5 baths  
2-car garage

**This cottage is ready for company,** even the stay-for-the-weekend kind. First, there's that well-placed coat closet and powder room in the entry. Then, the easy mingling potential of the kitchen with four-person island, the dining area, and great room with dramatic wood ceiling — all seamlessly connected. Best of all though, is that while the owner's suite is downstairs and private, guests enjoy two bedrooms, a bath and loft upstairs for a little downtime of their own.



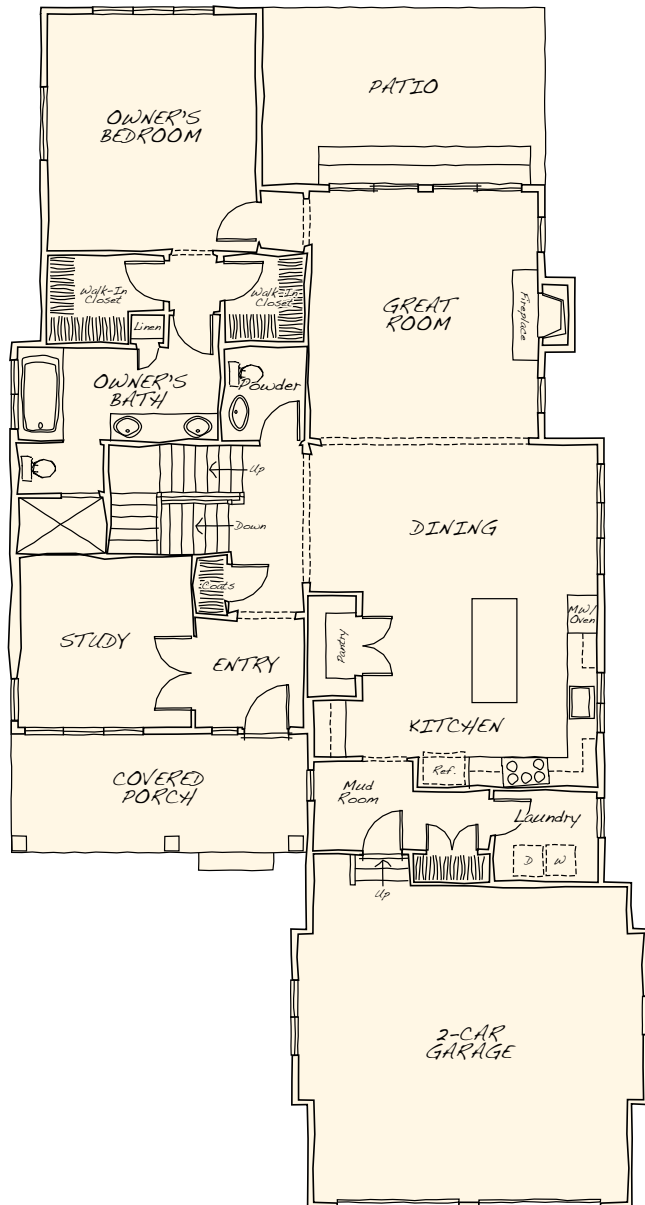
## The Pinehills

by NEW ENGLAND DEVELOPMENT

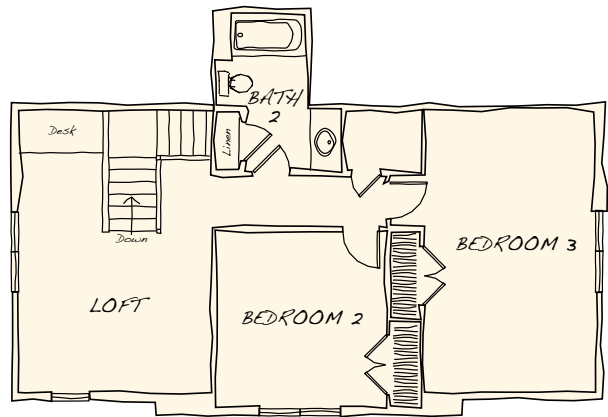
For more information, please contact the Standing Rock Sales Team at 508 209 2000

# CLIFFSIDE

BY WHITMAN HOMES



First Floor



Second Floor

## Cottages

AT THE PINEHILLS